

Navigate

You can use the Status Map GUI (Navigate) to display the status of all the systems being managed on your network. This map shows which hosts and/or pools in your network are having issues or problems, as defined by any Events tests you set running. You can then use the Sys Admin functions to resolve these problems.

To display the Status Map GUI, choose the Open Map option in the Navigate menu. If you don't want the map displayed, choose the Close Map option. The rest of this chapter details how to use the Status Map GUI and its supporting windows.

See also Chapter 5, "Monitoring Your Network System," of the *ENlighten/DSM User Guide*.

Status Map



The Status Map helps you navigate among individual managed hosts and/or pools on the network and it shows the status of each host and/or pool. The latter is done thorough changes in the color and color state (blinking or solid) of the icon for each host and/or pool.

An example of the Status Map window is shown in [Figure 11-1](#).

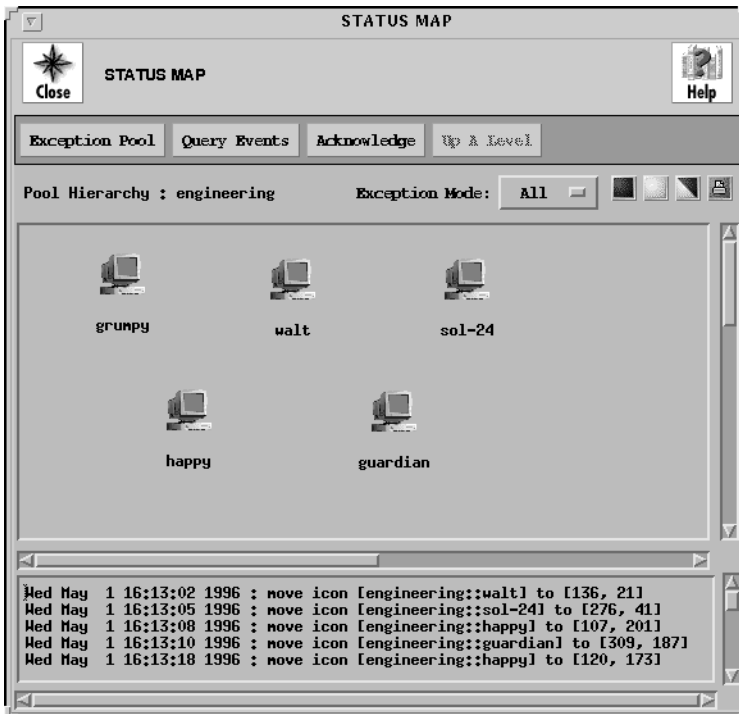


Figure 11-1 Status Map

The Status Map uses the following color scheme to show the current highest priority event for a host/pool. This list is shown from lowest to highest priority:

- Green - OK
- White - Information
- Yellow - Warning
- Blue - Error
- Red - Severe

See Chapter 5, “Monitoring Your Network System,” of the *ENlighten/DSM User Guide* for a description of the types of events that occur (acknowledged, unacknowledged, cleared, and uncleared) and how the Status Map will reflect these changes.

The rest of this section describes the basic functionality of the main Status Map window. See the Chapter 5, “Monitoring Your Network System,” of the *ENlighten/DSM User Guide*.

Map Navigation

Select an host or pool icon by clicking on it. All ENlighten Sys Admin functions act upon any hosts selected in the Status Map.

Map Editing

You can perform various operations on an icon by positioning the cursor over the desired icon and then using the right and/or left mouse buttons.

Right Mouse Button

Use the right mouse button while the cursor is over a host or pool icon to pop up a menu to further manipulate that icon.

The host pop-up menu offers the following choices:

- Host Overview
- Remove Host from Current Pool

Select the `Host Overview` option to bring up the Host Overview window. See [“Host Overview” on page 11-7](#) for more details on how to use this window. Select the `Remove Host from Current Pool` option to delete the host from the current pool and thus remove the host icon from the map (if you have the correct permissions to do so).

The pool pop-up menu offers the following choices:

- Zoom into Current Pool
- Delete Pool

Select the Zoom into Current Pool option to view the contents of the selected network pool.

Select the Delete Pool option to delete the pool definition from your list of configured pools. ENlighten/DSM will prompt you to confirm this action.

Left Mouse Button

Select a host or pool icon by left-clicking on it. You can also move icons by clicking and dragging (if you have Modify permissions).

You can view the contents of a pool by double-clicking on the pool icon. The Status Map will be redrawn to represent the configuration of the selected pool.

You can also bring up the Host Overview window for a host by double-clicking on its icon. See [“Host Overview” on page 11-7](#) for more details on how to use this window.

Window Buttons

This window contains the following buttons:

Exception Pool

Regular Pool

You can use this button to switch the display from the Exception Pool status icons to the Regular Pool status icons or vice versa.

An Exception Pool is a generic pool containing all the hosts that generated an alarm through Events or Sys Admin. The Exception Pool only shows unacknowledged events for those hosts.

The Exception Pool toggle button always shows the most severe exception (color) in its pool. You can click the Exception Pool option to display all the hosts in the Exception Pool on the Status Map. The Exception Pool then becomes your current active pool.

Query Events

You can click this button to bring up the Query Event Messages window and search for Events messages of a specific type. See [“Query Events” on page 11-11](#) for more details on how to use this window.

Acknowledge

You can click this button to acknowledge the unacknowledged events for the selected host or for all hosts in the selected pool. The flashing color of the icon will become a solid color, indicating there are no longer any unacknowledged events associated with the host(s). You can execute this option only if you have Modify permissions.



If you are in the Exception Pool and acknowledge events for a host, the icon for that host will be removed from the Status Map display.

Up A Level

You can click this button to traverse out of a sub-pool. This action will reset the network map, placing you outside of the sub-pool you are currently viewing. This is useful since ENlighten/DSM has the ability to place pools inside of pools, creating many layers of sub-pools.

Exception Mode

You can use this toggle to switch the display mode for the Exception Pool. The options are to show All exceptions in the Exception Pool (the default) or to only show the ones Hidden from your current point of view (those exceptions found in the pools in the level above, below, or alongside the pool you're currently viewing).

Information Areas

This window contains the following information areas: Pool Hierarchy, Status Map, and Event Notification. This window contains the following information areas:

Pool Hierarchy

This line shows the complete pool or sub-pool pathname for the icons being displayed in the Status Map. This indicates what depth level the pool or sub-pool is within its hierarchy.

Status Map

The Status Map is the large scrollable region below the action buttons. This map is used by both Sys Admin and Events functions. For Sys Admin, you can use the map to easily view which hosts are in what pools and then target some administration functions to only a subset of hosts in a pool. For Events, you can use the map to see when an event has been triggered on a host.

The Status Map consists of a background drawing (which can be blank) and (any) icons placed on the drawing. These icons represent individual hosts and/or sub-pools in the selected pool. You can modify the background drawing by placing the mouse in the Status Map area, clicking the right-mouse button, and selecting the Change Background Map option. Then choose the new background to Apply. You can only execute this option if you have Modify permissions.

Event Notification

The list box at the bottom of the window will display event messages as they come in. Any Status Map activity, such as when you change what the top-level pool view is, will also be reflected in this log. Events messages from all hosts are logged here, regardless of what pool you're currently viewing.

You can clean out this log by placing the mouse in the Event Notification area, clicking the right-mouse button, and selecting the Clear Messages option.

Host Overview

You can use this function to get an overview of the activity for your selected host. Refer to [“Map Editing” on page 11-3](#) to select a host for this function. The Host Overview window ([Figure 11-2](#)) will appear.

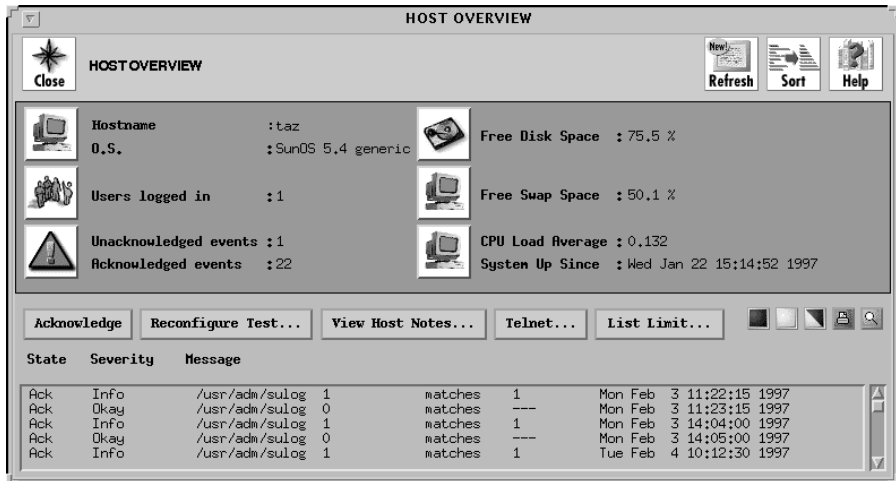


Figure 11-2 Host Overview

Combo Areas

This window will display the following information and icons:

Hostname O.S.

This area displays the selected hostname and its O/S type. You may click on the System icon next to this block of information to bring up the Processes window for the current host. Refer to [“Process Status” on page 4-31](#) to modify the host configuration.

Free Disk Space

This area displays the amount of free disk space currently available on the current host. You may click on the Disk icon next to this area to bring up the Disk Usage By Filesystem window for the current host. See [“Usage By Filesystem” on page 5-3](#) for details on how to use this window.

Users logged in

This area displays the number of users currently logged on to the current host. You may click on the User icon next to this area to bring up the Who Is Logged In? window for the current host. See [“Who is Logged In” on page 4-29](#) for details on how to use this window.

Free Swap Space

This area displays the amount of free swap space currently available on the current host. You may click on the System icon next to this area to bring up the Swap Space Usage window for the current host. See [“Swap Space” on page 8-8](#) for details on how to use this window.

Unacknowledged events

Acknowledged events

This area displays the number of unacknowledged and acknowledged events currently associated with the selected host. You may click on the Events icon next to this block of information to bring up the Query Event Messages window for the current host. Refer to [“Query Events” on page 11-11](#) for details on how to use this window.

Cpu Load Average

System Up Since

This area displays the current CPU load average and the most recent time the system was brought up for the selected host. You may click on the User icon next to this block of information to bring up the Summary of Processes by User window for the current host. See [“CPU Summary” on page 4-33](#) for details on how to use this window.

Buttons

This window contains the following buttons:

Acknowledge

Select one or more events from the Events List box and click this button to acknowledge it/them. This action will change the state of the selected event(s) in the Events List. You can execute this option only if you have Modify permissions.

This action could also update the host(s) icon status state in the Status Map, depending on the status for the rest of the events associated by that host.

Reconfigure Test ...

Select one or more unacknowledged events from the Events List box and click this button to bring up the Modify Events Test window for the selected event(s).

View Host Notes ...

Click this button to bring up the Host Overview - Host Notes window for the current host. This window will contain any notes associated with the current host, as shown in [Figure 11-3](#).

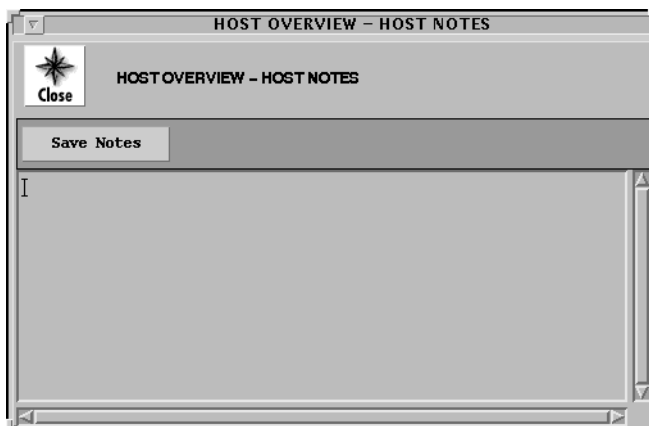


Figure 11-3 Host Overview-Host Notes window

You can also add more information to this window. To do so, move the cursor to the relevant point, type in your notes, and click the Save Notes button to update the current Host Notes.

Telnet ...

Click this button to pop up an xterm window running a remote session on the current host. From here you can log in to the system and then use any UNIX standard commands.

Events List

This list box shows all the current events, acknowledged and unacknowledged, received from the current host.

This list is sorted alphabetically by test name and then chronologically by event time. The most recent event will be inserted at the top of the sub-list for the relevant test as the event is received.

Each line in the list will display the event status (Ack = acknowledged, Unack = unacknowledged), severity, and message for that test/event.

You can change how many messages show in the list box by placing the mouse in the list, clicking the right-mouse button, and selecting from the following options:

- View All Events (the default)
- View Acknowledged Events (shows only acknowledged events, if any)
- View Unacknowledged Events (shows only unacknowledged events, if any)
- View Unclear Events (shows only unclear events, if any)

Refer to Chapter 5, “Monitoring Your Network Systems,” in the *ENlighten/DSM User Guide* for a definition of these “event types.”

Query Events

You can use this function to search for and view both alarm and normal logged messages from Events. The Query Events Messages window will appear ([Figure 11-4](#)).

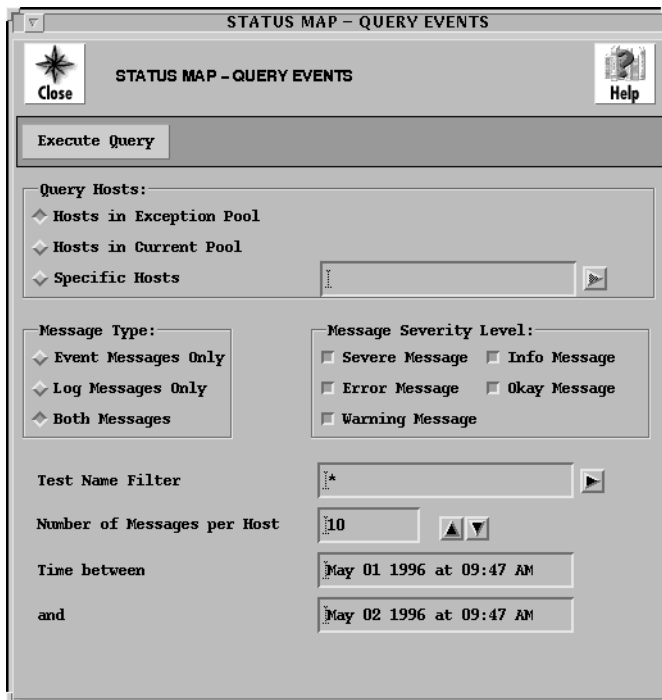


Figure 11-4 Query Events Messages window

Fields

This window contains the following fields:

Query Hosts

Use these toggles to specify which hosts to query for reports. The options are:

- Hosts in Exception Pool (the default)
- Hosts in Current Pool
- Specific Hosts

If you choose the Specific Hosts option, use the text field to the right of that option to specify which host(s) to check for messages. Leave a blank space between host names for multiple entries. You can also click the arrow button to the right to pop up a pick list of all hosts within the current pool and make your selection(s) from there.

Message Type

Use these toggles to specify which type of messages to search for in the reports. The options are:

- Event Messages Only
- Log Messages Only
- Both Messages (the default)

Event Messages Only are Events alarm messages generated by a test crossing a user-defined threshold. Log Messages Only are those Events informational messages generated when a test runs without generating an event and that (successful) result is logged.

Message Severity Level

You can use these toggles to choose what severity level of the messages to use in the search. The options are:

- Severe Message
- Info Message
- Error Message
- Okay Message
- Warning Message

You can select more than one severity level to use in the search; you must select at least one severity level. The default is all levels of message severity will be queried during the search.

Test Name Filter

You can use this field to limit the search to specific test names. You may type in the entire test name or just the first few letters of the test name. All tests whose name contains part or all of the specified string will be queried. Leave a blank space between test names for multiple

entries. You can also click the arrow button to the right to pop up a pick list of all pre-defined standard Events tests and make your selection(s) from there.

You can also use the standard UNIX wild cards '*', '[]', and '?' in this field (e.g., /home/*).

Number of Messages per Host

Events logs can become large very quickly and therefore take more time to search. You can use this field to help speed up the search time and view only the most recent X messages per host. You can also use the counter buttons to the right to increment or decrement the number displayed. The most recent message is always displayed first.

Timestamp between ... and

You can use these two fields to limit the search to messages logged between the specified times. See [Appendix C, "Time Formats,"](#) for details on specifying this time-date value.

Buttons

This window contains the following button:

Execute Query

After making your selections, click this button to begin the search process. When the query is completed, the results will be displayed ([Figure 11-5](#)).

The screenshot shows a window titled 'VIEW EVENT MESSAGE'. At the top left is a 'Close' button with a star icon, and at the top right is a 'Help' button with a question mark icon. Below the title bar is a 'Reconfigure Test...' button. The main area contains a table with the following data:

Hostname	Test Name	Value	Units	Severity	Status	Timestamp
happy	cpu load	9.10	units	Warning	high	Wed Feb 5 10:5
happy	cpu load	9.04	units	Warning	high	Wed Feb 5 09:5
happy	cpu load	9.04	units	Warning	high	Wed Feb 5 08:5
happy	cpu load	9.00	units	Warning	high	Wed Feb 5 07:5
happy	cpu load	9.00	units	Warning	high	Wed Feb 5 06:5
happy	cpu load	9.00	units	Warning	high	Wed Feb 5 05:5
happy	cpu load	9.02	units	Warning	high	Wed Feb 5 04:5
happy	cpu load	9.08	units	Warning	high	Wed Feb 5 03:5

Figure 11-5 New Event Messages

The list box shows all the messages matching your search criteria. Each line in the list will display the hostname, test name, logged value, units, severity, status, and time stamp.

From here you can select one of the tests and click the Reconfigure Test button to bring up the Modify Event Test window for that test.